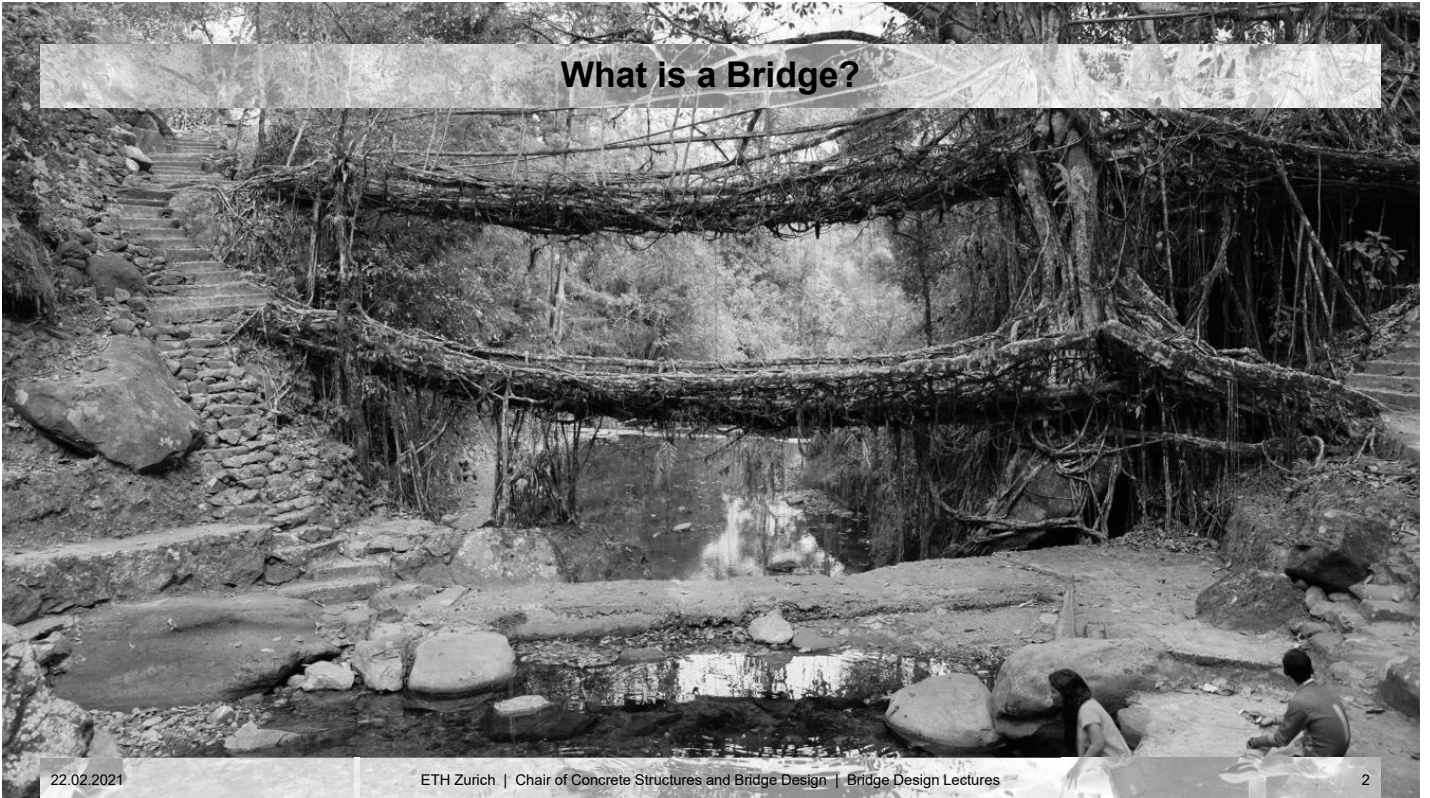


Bridge Design

Introduction

What is a Bridge?



22.02.2021

ETH Zurich | Chair of Concrete Structures and Bridge Design | Bridge Design Lectures

2

‘Living Root Bridges’, Meghalaya plateau, India

Photo Credit: Ferdinand Ludvig, professor for green technologies in landscape architecture at the Technical University of Munich; <https://edition.cnn.com/style/article/living-bridges-india-scn/index.html>

What is a Bridge?



Akashi Kaikyō Bridge, Awaji Island and Kobe, Japan (1998)

Owner/Designer: Honshu-Shikoku Bridge Authority

Contractors: Obayashi Corp., Kawasaki Heavy Industries, Solétanche Bachy, Taisei Corp., Kawada Industries, Mitsubishi Heavy Industries Ltd., Yokogawa Bridge Corp., ... (More than 100 contractors involved)

Type: Suspension

Materials: Steel (cables, pylons, deck truss), Reinforced Concrete (anchorages)

Longest main span in the world = 1,991 m

Overall length = 3,911 m

Pylon height = 283 m

Roadway bridge

References:

<https://structurae.net/en/structures/akashi-kaikyo-bridge>

<https://www.fhwa.dot.gov/publications/publicroads/98julaug/worlds.cfm>

Photo Credit: <http://eskipaper.com/pic/getsecond>

What is a Bridge?

Some definitions:

“a structure spanning and providing passage over a river, chasm, road, or the like.” [Dictionary.com]

“a structure carrying a pathway or roadway over a depression or obstacle (such as a river)” [Merriam-Webster]

“a structure that is built over a river, road, or railway to allow people and vehicles to cross from one side to the other” [Cambridge Dictionary]

“A bridge is a structure that is built over a railway, river, or road so that people or vehicles can cross from one side to the other.” [Collins Dictionary]

“A structure carrying a road, path, railway, etc. across a river, road, or other obstacle.” [Oxford Dictionary]

“a road, railway, or path that goes over a river, over another road etc, and the structure that supports it”
[MacMillan Dictionary]

“A structure spanning and providing passage over a gap or barrier, such as a river or roadway.” [FARLEX]

None of them are complete but they define the basic characteristics of a bridge

What is a Bridge?

Some definitions:

“a structure spanning and providing passage over a river, chasm, road, or the like.” [Dictionary.com]

“a structure carrying a pathway or roadway over a depression or obstacle (such as a river)” [Merriam-Webster]

“a structure that is built over a river, road, or railway to allow people and vehicles to cross from one side to the other” [Cambridge Dictionary]

“A bridge is a structure that is built over a railway, river, or road so that people or vehicles can cross from one side to the other.” [Collins Dictionary]

“A structure carrying a road, path, railway, etc. across a river, road, or other obstacle.” [Oxford Dictionary]

“a road, railway, or path that goes over a river, over another road etc, and the structure that supports it”
[MacMillan Dictionary]

“A structure spanning and providing passage over a gap or barrier, such as a river or roadway.” [FARLEX]

A bridge is a structure

What is a Bridge?

Some definitions:

“a structure spanning and providing passage over a river, chasm, road, or the like.” [Dictionary.com]

“a structure carrying a pathway or roadway over a depression or obstacle (such as a river)” [Merriam-Webster]

“a structure that is built over a river, road, or railway to allow people and vehicles to cross from one side to the other” [Cambridge Dictionary]

“A bridge is a structure that is built over a railway, river, or road so that people or vehicles can cross from one side to the other.” [Collins Dictionary]

“A structure carrying a road, path, railway, etc. across a river, road, or other obstacle.” [Oxford Dictionary]

“a road, railway, or path that goes over a river, over another road etc, and the structure that supports it”
[MacMillan Dictionary]

“A structure spanning and providing passage over a gap or barrier, such as a river or roadway.” [FARLEX]

A bridge provides a passage for vehicles, people, water, materials, utilities, ...

What is a Bridge?

Some definitions:

“a structure spanning and providing passage over a river, chasm, road, or the like.” [Dictionary.com]

“a structure carrying a pathway or roadway over a depression or obstacle (such as a river)” [Merriam-Webster]

“a structure that is built over a river, road, or railway to allow people and vehicles to cross from one side to the other” [Cambridge Dictionary]

“A bridge is a structure that is built over a railway, river, or road so that people or vehicles can cross from one side to the other.” [Collins Dictionary]

“A structure carrying a road, path, railway, etc. across a river, road, or other obstacle.” [Oxford Dictionary]

“a road, railway, or path that goes over a river, over another road etc, and the structure that supports it”
[MacMillan Dictionary]

“A structure spanning and providing passage over a gap or barrier, such as a river or roadway.” [FARLEX]

A bridge crosses a natural or manmade obstacle.

Bridge Classification

Based on traffic carried:

- Road traffic
- Rail traffic
(Heavy rail, Light rail)
- Non-motorised traffic
(Pedestrians, Cyclists)
- Water
(aqueducts, canals)
- Utilities
(water, electricity, telecommunications, natural gas)
- Raw Material
(conveyor belt)
- Wildlife



Bridges may be classified based on their:

- Purpose/Function, i.e. the type of traffic that they carry
- Typology
- Construction Materials

Graphic Credit: <http://blog.garverusa.com/2010/03/garver-awarded-multimodal-bridge.html>

Bridge Classification

Based on traffic carried:

- Road traffic
- Rail traffic
(Heavy rail, Light rail)
- Non-motorised traffic
(Pedestrians, Cyclists)
- Water
(aqueducts, canals)
- Utilities
(water, electricity, telecommunications, natural gas)
- Raw Material
(conveyor belts)
- Wildlife



Leonard P. Zakim Bunker Hill Memorial Bridge, Boston, MA, USA (2003)

Owner: Commonwealth of Massachusetts

Conceptual Design: Christian Menn (designer), Parsons Brinckerhoff

Detailed Design: Figg Bridge Engineers Inc., HNTB (Theodore Zoli)

Architect: Miguel Rosales

Erection Engineer: David Goodyear Engineering Services (now part of T.Y. Lin International)

Contractors: Atkinson Construction, Kiewit Corporation

Project Management: Bechtel Corporation, Parsons Brinckerhoff

Type: Cable-Stayed

Materials: Steel-concrete composite (main span), Prestressed concrete (side spans)

Main span = 227 m

Overall length = 436 m

Pylon height = 98 m

Roadway bridge

References:

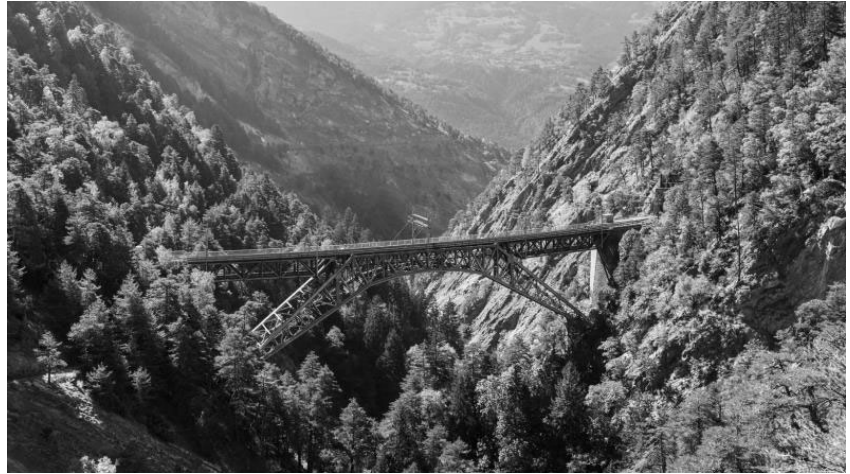
<https://structurae.net/en/structures/leonard-p-zakim-bunker-hill-memorial-bridge>

Photo Credit: <https://www.amazon.com/Boston-MA-Leonard-night-Highsmith/dp/B01LVZCX4J>

Bridge Classification

Based on traffic carried:

- Road traffic
- Rail traffic
(Heavy rail, Light rail)
- Non-motorised traffic
(Pedestrians, Cyclists)
- Water
(aqueducts, canals)
- Utilities
(water, electricity, telecommunications, natural gas)
- Raw Material
(conveyor belts)
- Wildlife



22.02.2021

ETH Zurich | Chair of Concrete Structures and Bridge Design | Bridge Design Lectures

10

Bietschtal Bridge, Raron, Valais, Switzerland (1913) – Retrofitted in 1986

Owner: BLS Bern-Lötschberg-Simplon-Bahn

Design & Construction: Albert Buss & Cie, Pratteln

Type: Arch Truss

Materials: Steel

Arch span = 95 m

Overall length = 110 m

Railway bridge

References:

<https://structurae.net/en/structures/bietschtalbrücke>

SBB & GSK, "Schweizer Bahnbrücken," Verlag Scheidegger & Spiess, Zürich (2013)

Photo Credit: Georg Aerni (2012)

Note:

Railway traffic can also be classified by the track system, such as standard gauge ("Normalspur", 1.435 m) and narrow gauge ("Meterspur", 1.00 m) in Switzerland. Light rail systems include tramways, which usually use narrow gauge tracks. While standard track traffic loads are well standardised through UIC, traffic loads on light rail systems vary strongly and are often specified by the owner.

Bridge Classification

Based on traffic carried:

- Road traffic
- Rail traffic
(Heavy rail, Light rail)
- Non-motorised traffic
(Pedestrians, Cyclists)
- Water
(aqueducts, canals)
- Utilities
(water, electricity, telecommunications, natural gas)
- Raw Material
(conveyor belts)
- Wildlife



Tilikum Crossing, Portland, OR, USA (2015)

Owner: TriMet

Conceptual Design: HNTB

Detailed Design: T.Y. Lin International

Architect: Donald MacDonald Architects

Contractor: Kiewit Infrastructure West Co.

Type: Cable-Stayed – Extradosed Hybrid

Materials: Concrete

Main span = 240 m

Overall length = 520 m

Pylon height = 55 m

Transit bridge (Light rail, streetcars, buses, bicycles, pedestrians, emergency vehicles)

References:

<https://structurae.net/en/structures/tilikum-crossing>

https://en.wikipedia.org/wiki/Tilikum_Crossing

https://www.tylin.com/en/projects/tilikum_crossing_bridge_of_the_people

(Photo Credits: Tom Paiva Photography, Blueprint22 Photography)

Bridge Classification

Based on traffic carried:

- Road traffic
- Rail traffic
(Heavy rail, Light rail)
- Non-motorised traffic
(Pedestrians, Cyclists)
- Water
(aqueducts, canals)
- Utilities
(water, electricity, telecommunications, natural gas)
- Raw Material
(conveyor belts)
- Wildlife



Max-Eyth Footbridge, Stuttgart, Germany (1989)

Owner: Landeshauptstadt Stuttgart

Designer: Schlaich Bergermann Partner

Architect: Schlaich Bergermann Partner, Brigitte Schlaich-Peterhans

Contractors: Pfeifer Seil- und Hebetechnik GmbH, Wayss & Freytag

Type: Suspension

Materials: Steel

Main span = 114 m

Overall length = 164 m

Pylon height = 24.5 m

Pedestrian bridge

References:

<https://structurae.net/en/structures/max-eyth-footbridge>

<https://www.sbp.de/projekt/fussgaengerbruecke-max-eyth-see-ueber-den-neckar/> (Photo Credit)

Bridge Classification

Based on traffic carried:

- Road traffic
- Rail traffic
(Heavy rail, Light rail)
- Non-motorised traffic
(Pedestrians, Cyclists)
- Water
(aqueducts, canals)
- Utilities
(water, electricity, telecommunications, natural gas)
- Raw Material
(conveyor belts)
- Wildlife



Cykelslangen (Bicycle Snake), Copenhagen, Denmark (2014)

Owner: Københavns Kommune

Designer: Rambøll

Architect: Dissing+Weitling

Contractors: MT Højgaard

Type: Girder

Materials: Steel

Typical span = 17 m

Overall length = 230 m

Deck width = 4.6 m

Cyclist bridge

References:

<https://structurae.net/en/structures/cykelslangen>

Photo Credit: <https://www.toposmagazine.com/copenhagen-cykelslangen/#Rasmus-Hjortshoj-Cykelslangen-LARGE-07-631x440>

Bridge Classification

Based on traffic carried:

- Road traffic
- Rail traffic
(Heavy rail, Light rail)
- Non-motorised traffic
(Pedestrians, Cyclists)
- Water
(aqueducts, canals)
- Utilities
(water, electricity, telecommunications, natural gas)
- Raw Material
(conveyor belts)
- Wildlife



Allos Aqueduct (Acueducto sobre el río Salado), Valle de Yerri/Deierri, Navarra, Spain (1939)

Designer: Eduardo Torroja

Contractors: Huerta y Cía., S.A.

Type: Girder

Materials: Prestressed Concrete (superstructure), Reinforced Concrete (substructure)

Typical span = 20 m

Overall length = 219 m

Aqueduct bridge

References:

<https://structurae.net/en/structures/allos-aqueduct>

Bridge Classification

Based on traffic carried:

- Road traffic
- Rail traffic
(Heavy rail, Light rail)
- Non-motorised traffic
(Pedestrians, Cyclists)
- Water
(aqueducts, canals)
- Utilities
(water, electricity, telecommunications, natural gas)
- Raw Material
(conveyor belts)
- Wildlife



Magdeburg Canal Bridge, Hohenwarthe, Möser, Jerichower Land, Saxony-Anhalt, Germany (2003)

Owner: Bundesministerium für Verkehr, Bau- und Wohnungswesen

Conceptual Design: Ingenieurbüro Grassl GmbH Beratende Ingenieure Bauwesen

Detailed Design: HRA Ingenieurgesellschaft mbH Bochum

Architect: Winking · Froh Architekten BDA

Contractors: Bilfinger Berger SE, Dillinger Stahlbau GmbH, OSB Oderberger Stahlbau GmbH

Type: Truss (main crossing) / Girder (approach viaduct)

Materials: Steel (superstructure), Reinforced Concrete (substructure)

Main span = 106 m

Typical approach span = 43 m

Overall length = 918 m

Canal bridge

References:

<https://structurae.net/en/structures/magdeburg-canal-bridge>

Photo Credit: <https://info-maniac.com/en/Attraction/magdeburg-water-bridge/>

Bridge Classification

Based on traffic carried:

- Road traffic
- Rail traffic
(Heavy rail, Light rail)
- Non-motorised traffic
(Pedestrians, Cyclists)
- Water
(aqueducts, canals)
- Utilities
(water, electricity, telecommunications, natural gas)
- Raw Material
(conveyor belts)
- Wildlife



Danube Pipeline Bridge near Vienna, Vienna 11 / Mannwörth, Austria

Contractor: Waagner-Biro AG

Type: Suspension

Materials: Steel

Main span = 260 m

Pipeline bridge

References:

<https://structurae.net/en/structures/danube-pipeline-bridge-near-Vienna> (Photo Credit)

Bridge Classification

Based on traffic carried:

- Road traffic
- Rail traffic
(Heavy rail, Light rail)
- Non-motorised traffic
(Pedestrians, Cyclists)
- Water
(aqueducts, canals)
- Utilities
(water, electricity, tele-communications, natural gas)
- Raw Material
(conveyor belts)
- Wildlife



Flyingbelt system at Holcim Barosso Cement Manufacturing Plant, Brazil (2015)

Client: LafargeHolcim

Design & Construction: Semperit Group (conveyor belt), Agudio (ropeway)

Type: Ropeway

Materials: Steel

Overall length = 7,200 m

Conveyor belt bridge

References:

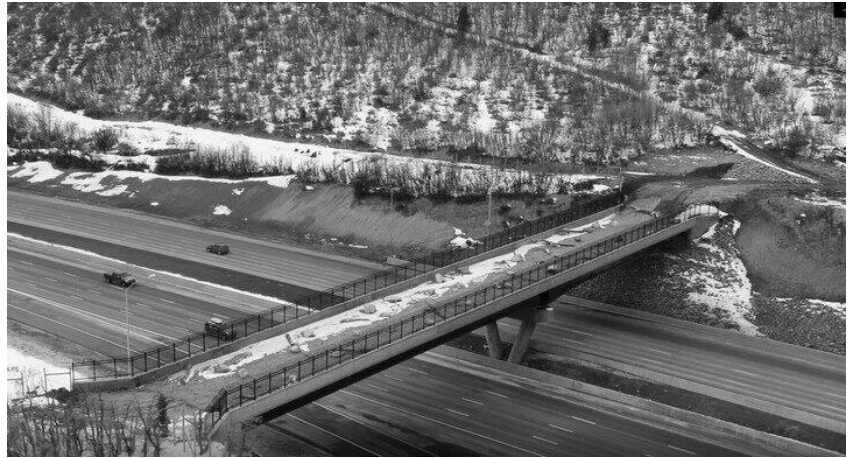
<https://www.agudio.com/en/products/flyingbelt/main-projects/barroso-brazil>

<https://mqworld.com/2016/07/04/semperit-group-innovative-aerial-conveyor-system-flyingbelt-sempertrans-agudio-put-operation-brazil/> (Photo Credit)

Bridge Classification

Based on traffic carried:

- Road traffic
- Rail traffic
(Heavy rail, Light rail)
- Non-motorised traffic
(Pedestrians, Cyclists)
- Water
(aqueducts, canals)
- Utilities
(water, electricity, telecommunications, natural gas)
- Raw Material
(conveyor belts)
- Wildlife



I-80 Wildlife Overpass, Park City, Utah, USA (2018)

Client: Utah Department of Transportation

Design: WSP

Type: Girder

Materials: Steel-concrete composite

Overall length = 98 m

References:

<https://www.atlasobscura.com/places/i-80-wildlife-overpass> (Photo Credit)

<https://www.wsp.com/en-CH/insights/utah-opens-states-first-wildlife-bridge-overpass>

Bridge Classification

Based on typology:

- Slab
- Girder
- Truss
- Frame
- Arch
- Suspension
- Cable-Stayed
- Extradosed
- Underslung
- Stress-ribbon
- Floating
- Movable
- Hybrid systems



Great Seto Bridge, Seto Inland Sea, Honshu & Shikoku, Japan (1988)

Series of six double-deck bridges connecting the Okayama and Kagawa prefectures across a series of five islands.

Owner: Honshu Shikoku Bridge Authority

Overall length = 13 km

Types: Suspension, Cable-Stayed, Truss

References:

https://en.wikipedia.org/wiki/Great_Seto_Bridge

<https://www.ana-cooljapan.com/destinations/kagawa/greatsetobridge> (Photo Credit)

Bridge Classification

Based on typology:

- Slab (Plattenbrücke)
- Girder
- Truss
- Frame
- Strut frame
- Arch
- Suspension
- Cable-Stayed
- Extradosed
- Underslung
- Stress-ribbon
- Floating
- Movable
- Hybrid systems



I-70 Overpass at East Street, Junction City, KS, USA

Owner: Kansas Department of Transportation

Designer: BG Consultants

Type: Slab (haunched)

Materials: Prestressed Concrete (superstructure), Reinforced Concrete (substructure)

Roadway bridge

References:

<http://www.bgcons.com/project/post-tensioned-rcsh-bridge-on-i-70-overpass-at-east-street> (Photo Credit)

Bridge Classification

Based on typology:

- Slab
- Girder (Balkenbrücke)
- Truss
- Frame
- Strut frame
- Arch
- Suspension
- Cable-Stayed
- Extradosed
- Underslung
- Stress-ribbon
- Floating
- Movable
- Hybrid systems



22.02.2021

ETH Zurich | Chair of Concrete Structures and Bridge Design | Bridge Design Lectures

21

Felsenau Viaduct, Bern, Switzerland (1974)

Design: Christian Menn, Rigendinger (W. Maag), Emch+Berger AG

Type: Girder

Materials: Prestressed Concrete (superstructure), Reinforced Concrete (substructure)

Longest span = 144 m

Overall length = 1,116 m

Roadway bridge

References:

<https://structurae.net/en/structures/felsenau-viaduct>

<https://jadetheobscure.files.wordpress.com/2016/02/menn-bruecken-p190-felsenau-bern-1972.jpg> (Photo Credit)

Bridge Classification

Based on typology:

- Slab
- Girder
- Truss (Fachwerkbrücke)
- Frame
- Strut frame
- Arch
- Suspension
- Cable-Stayed
- Extradosed
- Underslung
- Stress-ribbon
- Floating
- Movable
- Hybrid systems



Firth of Forth Bridge, Queensferry, Edinburgh, UK (1890)

Designer: Sir John Fowler, Benjamin Baker

Contractor: Sir William Arrol & Co.

Type: Cantilever Truss

Materials: Steel

Main span(s) = (2x) 521 m

Overall length = 2,523 m

Railway bridge

References:

<https://structurae.net/en/structures/forth-rail-bridge>

<https://www.nms.ac.uk/explore-our-collections/stories/science-and-technology/forth-bridge-paint-mixer/>

Photo Credit: Ross G. Strachan

Bridge Classification

Based on typology:

- Slab
- Girder
- Truss
- Frame (Rahmenbrücke)
- Strut frame
- Arch
- Suspension
- Cable-Stayed
- Extradosed
- Underslung
- Stress-ribbon
- Floating
- Movable
- Hybrid systems



22.02.2021

ETH Zurich | Chair of Concrete Structures and Bridge Design | Bridge Design Lectures

23

Wildüberführung Halbmitl, Chur, Switzerland (2016)

Owner: Bundesamt für Strassen Astra

Designer: dsp Ingenieure+Planer AG

Architect: Eduard Imhof

Type: Frame

Materials: Prestressed Concrete

Overall length = 54 m (two spans crossing A13 motorway, RhB and SBB lines, cover width 50 m)

Wildlife crossing (with rural road)

Photo Credit: Beat Bühler Fotografie Zürich

Note:

The term “frame bridge” is used here for bridges where the abutment walls provide significant clamping (hogging moments) to the bridge girder, which is in most cases a slab. Frame action does also exist in many other bridge typologies, such as girder bridges with monolithically connected piers.

Bridge Classification

Based on typology:

- Slab
- Girder
- Truss
- Frame
- Strut frame (Sprengwerk)
- Arch
- Suspension
- Cable-Stayed
- Extradosed
- Underslung
- Stress-ribbon
- Floating
- Movable
- Hybrid systems



22.02.2021

ETH Zurich | Chair of Concrete Structures and Bridge Design | Bridge Design Lectures

24

Mühlebach Bridge, Stalden & Töbel, VS, Switzerland (1959)

Owner: Visp-Zermatt-Bahn

Designer: Alexandre Sarrasin

Type: Strut Frame

Materials: Concrete

Overall length = 67 m

Railway bridge

References:

SBB & GSK, "Schweizer Bahnbrücken," Verlag Scheidegger & Spiess, Zürich (2013)

Photo Credit: Georg Aerni (2012)

Bridge Classification

Based on typology:

- Slab
- Girder
- Truss
- Frame
- Strut frame
- Arch (Bogenbrücke)
- Suspension
- Cable-Stayed
- Extradosed
- Underslung
- Stress-ribbon
- Floating
- Movable
- Hybrid systems



22.02.2021

ETH Zurich | Chair of Concrete Structures and Bridge Design | Bridge Design Lectures

25

Tamina Bridge, Pfäfers, St. Gallen, Switzerland (2017)

Owner: Tiefbauamt St. Gallen

Design: Leonhardt, Andrä und Partner

(with dsp Ingenieure + Planer AG as project partner)

Contractors: J. Erni AG, Meisterbau AG, STRABAG AG

Type: Arch

Materials: Reinforced Concrete (Arch), Prestressed Concrete (Deck)

Arch span = 259 m

Overall length = 475 m

Roadway bridge

References:

<https://structurae.net/en/structures/tamina-bridge>

Photo Credit: Von Kecko from Rural area of Eastern Switzerland - Tamina Bridge Pfäfers-Valens, CC BY 2.0, <https://commons.wikimedia.org/w/index.php?curid=80847098>

Bridge Classification

Based on typology:

- Slab
- Girder
- Truss
- Frame
- Strut frame
- Arch
- Suspension (Hängebrücke)
- Cable-Stayed
- Extradosed
- Underslung
- Stress-ribbon
- Floating
- Movable
- Hybrid systems



Golden Gate Bridge, San Francisco, CA, USA (1937)

Designers: Joseph Strauss, Leon Moisseiff, Charles Alton Ellis

Architect: Irving Morrow

Contractor: Bethlehem Steel Co.

Type: Suspension

Materials: Steel

Main span = 1,280 m

Overall length = 2,737 m

Tower height = 227 m

Roadway bridge

References:

<https://structurae.net/en/structures/golden-gate-bridge>

https://en.wikipedia.org/wiki/Golden_Gate_Bridge#Construction

<https://www.ge.com/reports/engineers-build-golden-gate-bridge-today/> (Photo Credit)

Bridge Classification

Based on typology:

- Slab
- Girder
- Truss
- Frame
- Strut frame
- Arch
- Suspension
- Cable-Stayed (Schrägseilbrücke)
- Extradosed
- Underslung
- Stress-ribbon
- Floating
- Movable
- Hybrid systems



Lali Bridge, Khuzestan, Iran (2011)

Owner: Water & Power Resources Development Co.

Tender Designer: Hexa engineering

Contractor: Boland Payeh Construction Co., with NCK and dsp Ingenieure+Planer AG as consultants)

Type: Cable-Stayed

Materials: Concrete

Main span = 256 m

Overall length = 460 m

Pylon height = 145 m

Roadway bridge

References:

<https://structurae.net/en/structures/lali-bridge>

http://www.dsp.ch/tl_files/dsp/dienstleistungen/01_brueckenbau_neubau/21_30_Lali_Bridge_Iran.pdf

<http://www.ttbp.ir/en/project/gotvand-e-olya-bridge> (Photo Credit)

Bridge Classification

Based on typology:

- Slab
 - Girder
 - Truss
 - Frame
 - Strut frame
 - Arch
 - Suspension
 - Cable-Stayed
 - Extradosed
 - Underslung
 - Stress-ribbon
 - Floating
 - Movable
 - Hybrid systems
- } clear distinction?
(see notes)



22.02.2021

ETH Zurich | Chair of Concrete Structures and Bridge Design | Bridge Design Lectures

28

Sunniberg Bridge, Klosters-Serneus, Grisons, Switzerland (2005)

Owner: Canton of Graubünden

Designer: Christian Menn

Architect: Andrea Deplazes

Contractors: Batigroup AG, Vetsch AG

Type: Extradosed (Cable-Stayed according to Ch. Menn, who never accepted the term “extradosed”)

Materials: Prestressed Concrete (superstructure), Reinforced Concrete (substructure)

Longest span = 140 m

Overall length = 526 m

Pylon height = 77 m

Roadway bridge

References: <https://structurae.net/en/structures/sunniberg-bridge>

Note: Basically, “extradosed bridges” can be interpreted as cable stayed bridges with very flat inclinations of the stay cables, such that normal forces in the girder dominate over the vertical support provided by the cables – which usually also requires a stiffer girder than in cable stayed bridges. They could however also be seen as externally prestressed bridges with cables lying partially outside the depth of the cross-section.

A possible criterion for the classification is the design criterion used for the cables: Either they are designed and detailed as stay cables (strict fatigue stress limitations, expensive technology, but less restrictive partial factors on permanent loads vs. prestress) or as external post-tensioning cables (higher stresses in cables permitted, inexpensive technology). In fact, the first “extradosed” bridges used the less expensive external prestressing technology, which economically at least partly compensates the structural inefficiency caused by the flat inclination of the cables. However, external prestressing technology is inadequate for extradosed cables (waterproofing, fatigue, dynamic effects), and recent extradosed bridges therefore use technology closer to stay cables. For more details, see IABSE SED Nr. 19, 2019.

Following the criteria above, the Sunnibergbrücke is indeed rather a cable-stayed bridge: stay cable technology and design approaches were used.

Bridge Classification

Based on typology:

- Slab
- Girder
- Truss
- Frame
- Strut frame
- Arch
- Suspension
- Cable-Stayed
- Extradosed
- Underslung (Unterspannter Träger)
- Stress-ribbon
- Floating
- Movable
- Hybrid systems



22.02.2021

ETH Zurich | Chair of Concrete Structures and Bridge Design | Bridge Design Lectures

29

Baltschieder Viaduct, Baltschieder & Eggerberg, VS, Switzerland (1988)

Owner: Bern-Lötschberg-Simplon-Bahn

Design: Emch + Berger, BLS Bauabteilung

Construction: Ed. Züblin & Cie, VSE International AG

Type: Underslung Girder

Materials: Concrete

Main span = 50 m

Overall length = 103 m

Railway bridge

References:

<https://structurae.net/en/structures/baltschiederbrücke>

SBB & GSK, "Schweizer Bahnbrücken," Verlag Scheidegger & Spiess, Zürich (2013)

Photo Credit: Georg Aerni (2012)

Bridge Classification

Based on typology:

- Slab
- Girder
- Truss
- Frame
- Strut frame
- Arch
- Suspension
- Cable-Stayed
- Extradosed
- Underslung
- Stress-ribbon (Spannbandbrücke)
- Floating
- Movable
- Hybrid systems



Lionel Viera Bridge (Puente del Este-La Barra), Maldonado River, Uruguay (1965)

Design: Lionel Viera

Type: Stress Ribbon

Materials: Prestressed Concrete

Main span = 90 m

Overall length = 150 m

Roadway bridge

References:

<https://structurae.net/en/structures/puente-leonel-viera>

https://en.wikipedia.org/wiki/Leonel_Viera_Bridge (Photo Credit)

Bridge Classification

Based on typology:

- Slab
- Girder
- Truss
- Frame
- Strut frame
- Arch
- Suspension
- Cable-Stayed
- Extradosed
- Underslung
- Stress-ribbon
- Floating (Schwimmbrücke)
- Movable
- Hybrid systems



22.02.2021

ETH Zurich | Chair of Concrete Structures and Bridge Design | Bridge Design Lectures

31

SR 520 Evergreen Point Floating Bridge, Seattle, WA, USA (2016)

Owner: Washington State Department of Transportation (WSDOT)

Design: WSDOT

Construction: Kiewit-General-Manson JV

Type: Floating/Pontoon

Materials: Concrete

Overall length = 2,350 m

Roadway bridge

References:

https://en.wikipedia.org/wiki/Evergreen_Point_Floating_Bridge

<https://structurae.net/en/structures/evergreen-point-floating-bridge>

<https://www.wsdot.wa.gov/sites/default/files/2017/05/16/SR520-Booklet-FB042017.pdf>

<https://www.enr.com/blogs/15-evergreen/post/42615-more-milestones-hit-in-sr-520-floating-bridge-construction> (Photo Credit)

Bridge Classification

Based on typology:

- Slab
- Girder
- Truss
- Frame
- Strut frame
- Arch
- Suspension
- Cable-Stayed
- Extradosed
- Underslung
- Stress-ribbon
- Floating
- Movable (Klappbrücke, ...)
- Hybrid systems



La Porta d'Europa Bridge, Barcelona, Spain (2000)

Owner: Autoritat Portuària de Barcelona

Design: Arenas & Asociados Ingeniería de Diseño

Construction: FCC Fomento de Construcciones y Contratas, Guinovart, Urssa

Type: Bascule

Materials: Steel

Longest span = 54 m

Overall length = 242 m

Roadway bridge

References:

<https://structurae.net/en/structures/la-porta-d-europa-bridge>

<http://www.arenasing.com/en/projects/movable-bridges/porta-deuropa-bridge-Barcelona> (Photo Credit)

Bridge Classification

Based on typology:

- Slab
- Girder
- Truss
- Frame
- Strut frame
- Arch
- Suspension
- Cable-Stayed
- Extradosed
- Underslung
- Stress-ribbon
- Floating
- Movable
- Hybrid systems



Yavuz Sultan Selim (Third Bosphorus) Bridge, Istanbul, Turkey (2016)

Owner: Republic of Turkey

Design: Michel Virlogeux, T ingénierie, Genève

Construction: Hyundai Engineering & Construction, SK Engineering & Construction

Type: Suspension with stay cables

Materials: Steel (superstructure), Reinforced Concrete (substructure)

Main span = 1,408 m

Overall length = 1,875 m

Roadway & Railway bridge

References:

<https://structurae.net/en/structures/yavuz-sultan-selim-bridge>

<https://www.enr.com/articles/40438-record-turkey-bridge-sets-the-pace-for-its-innovators-new-ceo> (Photo Credit)

Bridge Classification

Based on typology:

- Slab
- Girder
- Truss
- Frame
- Strut frame
- Arch
- Suspension
- Cable-Stayed
- Extradosed
- Underslung
- Stress-ribbon
- Floating
- Movable
- Hybrid systems



22.02.2021

ETH Zurich | Chair of Concrete Structures and Bridge Design | Bridge Design Lectures

34

Miho Museum Bridge, Kyoto, Japan (1997)

Owner: Shumei Culture Foundation

Designers: Aoki Corporation, Leslie E. Robertson & Associates, R.L.L.P., Nakata & Associates, Whole Force Studio

Contractors: Shimizu Corporation, Kawasaki Heavy Industries, Sumitomo Construction

Type: Cable-stayed/Underslung

Materials: Steel

Span = 120 m

Pedestrian bridge

References:

<https://structurae.net/en/structures/miho-museum-footbridge>

<https://www.lera.com/miho-museum-and-bridge-c63q> (Photo Credit)

Bridge Classification

Based on material:

- Masonry
- Timber
- Iron
- Steel
- Concrete
- Composite
(steel-concrete)



Tower Bridge, London, UK (1894)

Designers: Henry Marc Brunel, John Wolfe-Barry

Architect: Sir Horace Jones

Contractor: Sir William Arrol

Type: Bascule

Materials: Steel, Masonry veneer

Main span = 79 m

Overall length = 286 m

Roadway/Pedestrian bridge

References:

<https://structurae.net/en/structures/tower-bridge>

[https://fr.wikipedia.org/wiki/Tower_Bridge#/media/Fichier:Tower Bridge at dawn 24-01-2015.jpg](https://fr.wikipedia.org/wiki/Tower_Bridge#/media/Fichier:Tower_Bridge_at_dawn_24-01-2015.jpg) (Photo Credit)

Bridge Classification

Based on material:

- Masonry
- Timber
- Iron
- Steel
- Concrete
- Composite
(steel-concrete)



Landwasser Viaduct, Filisur, Grisons, Switzerland (1902)

Designers: Friedrich C. S. von Hennings, Alexander Acatos, Robert Moser

Contractor: Müller & Zeerleder

Type: Arch Viaduct

Materials: Masonry

Typical span = 20 m

Overall length = 100 m

Railway bridge

References:

<https://structurae.net/en/structures/landwasser-viaduct>

<https://www.mystsnet.com/en/stories/9-instagrammable-spots-along-the-grand-train-tour/#next> (Photo Credit)

Bridge Classification

Based on material:

- Masonry
- Timber
- Iron
- Steel
- Concrete
- Composite
(steel-concrete)



Agger Bridge, Lohmar Höngersberg, Germany (2014)

Owner: City of Lohmar

Designer: Schaffitzel Holzindustrie GmbH + Co.

Contractor: Ingenieurbüro Miebach

Type: Tied-Arch

Materials: Timber

Main span = 45 m

Overall length = 65 m

Roadway bridge

References:

<https://www.schaffitzel.de/en/bridge-construction/references/289-hoengesberg-de>

<https://www.ib-miebach.de/en/projects/timber-bridges/> (Photo Credit)

Bridge Classification

Based on material:

- Masonry
- Timber
- Iron
- Steel
- Concrete
- Composite
(steel-concrete)



22.02.2021

ETH Zurich | Chair of Concrete Structures and Bridge Design | Bridge Design Lectures

38

Iron Bridge, Coalbrookdale, UK (1779)

Owner: Telford and Wrekin Borough Council

Designer: Abraham Darby III

Architect: Thomas Farnolls Pritchard

Type: Arch

Materials: Cast Iron

Main span = 30 m

Overall length = 60 m

Roadway bridge (until 1934), Pedestrian bridge

References:

<https://structurae.net/en/structures/iron-bridge>

<https://www.flickr.com/photos/45777493@N06/4394579596/> (Photo Credit)

Bridge Classification

Based on material:

- Masonry
- Timber
- Iron
- Steel
- Concrete
- Composite
(steel-concrete)



Eglisau Bridge, Eglisau, Zurich, Switzerland (1897)

Owner: Schweizerische Nordostbahn, SBB

Designer: Schweizerische Nordostbahn, Robert Moser & Züblin Ingenieure, Adolf Bühler

Contractor: Albert Buss & Cie, Gutehoffnungshütte

Type: Truss

Materials: Steel

Main span = 90 m

Overall length = 439 m

Railway bridge

References:

<https://structurae.net/en/structures/eglisau-railroad-bridge>

SBB & GSK, "Schweizer Bahnbrücken," Verlag Scheidegger & Spiess, Zürich (2013)

Photo Credit: Jesus Portas (<https://trainspo.com/photo/82776/?list=all>)

Bridge Classification

Based on material:

- Masonry
- Timber
- Iron
- Steel
- Concrete
- Composite
(steel-concrete)



Vulpera/Tarasp Bridge, Tarasp, Grisons, Switzerland (2010)

Owner: Tiefbauamt Graubünden

Designer: dsp Ingenieure & Planer AG, ACS Partner AG

Architect: Eduard Imhof

Type: Girder

Materials: Prestressed Concrete (superstructure), Reinforced Concrete (substructure)

Main span = 104 m

Overall length = 236 m

Roadway bridge

References:

<https://structurae.net/en/structures/vulperatarasp-bridge>

Photo Credit: dsp Ingenieure & Planer AG

Bridge Classification

Based on material:

- Masonry
- Timber
- Iron
- Steel
- Concrete
- Composite
(steel-concrete)



22.02.2021

ETH Zurich | Chair of Concrete Structures and Bridge Design | Bridge Design Lectures

41

Schönenwerd Bridge, Dietikon, Switzerland (2017)

Owner: Tiefbauamt Kanton Zürich

Designer: dsp Ingenieure & Planer AG

Architect: Balz Amrein

Type: Girder

Materials: Steel-Concrete composite

Span = 50 m

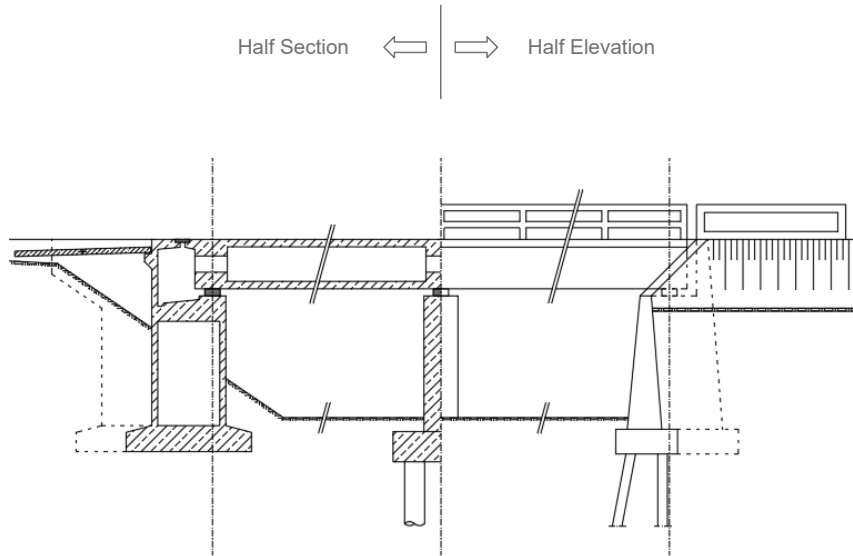
Roadway bridge

References:

<http://www.dsp.ch/bruecken-neubau.html>

Photo Credit: dsp Ingenieure & Planer AG

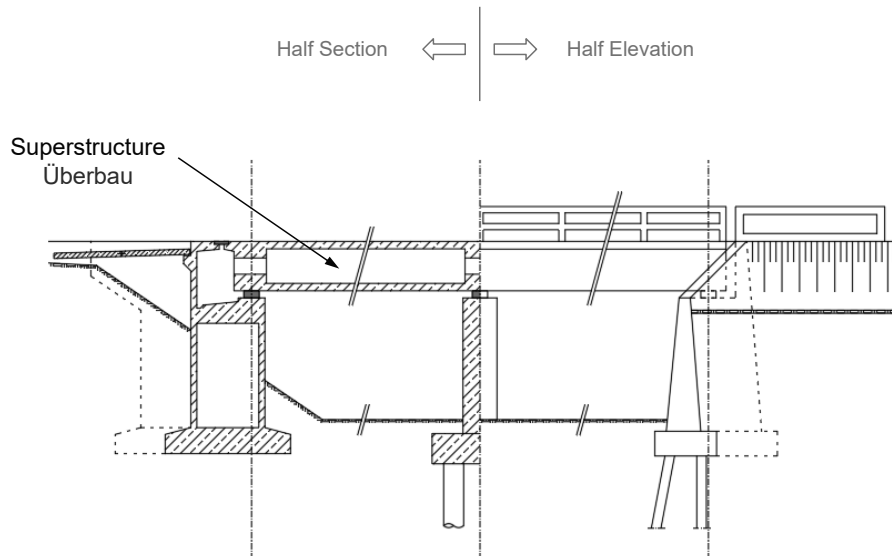
General Characteristics - Nomenclature



Notes:

For the purposes of defining the general characteristics of bridges, an example of a typical roadway girder bridge is considered.

General Characteristics - Nomenclature



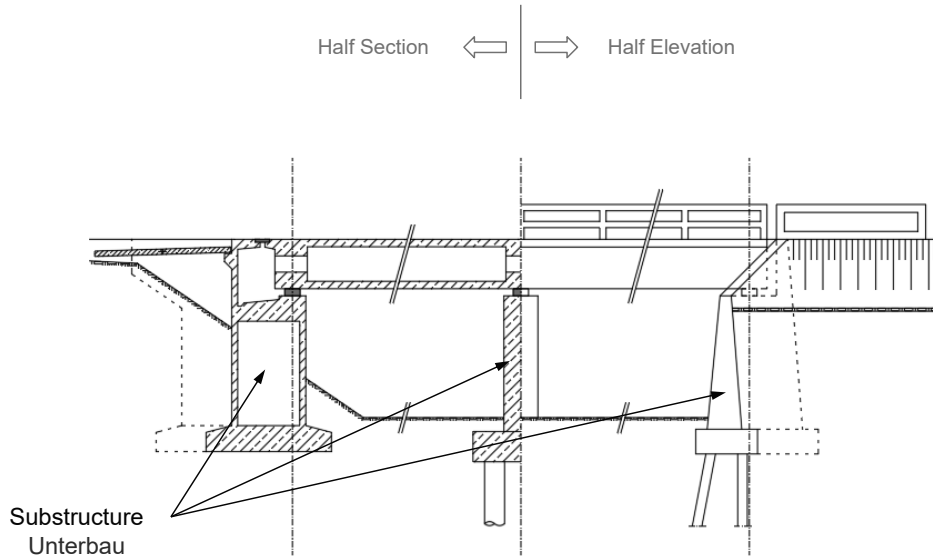
Notes:

In bridges, two main parts are usually distinguished: The superstructure and the substructure.

The superstructure includes the main load bearing structural elements along with the roadway (or railway, etc., depending on the type of traffic carried). It includes all of the elements that facilitate the transport of vehicles, people, material, etc, such as: wearing surface, sealing membrane, sidewalks, traffic barriers and pedestrian railings, drainage systems, utility ducts, etc. It also includes elements to accommodate for expansion and contraction of the superstructure and its support onto the substructure. Examples are presented in the following slides.

[continued on following slide]

General Characteristics - Nomenclature

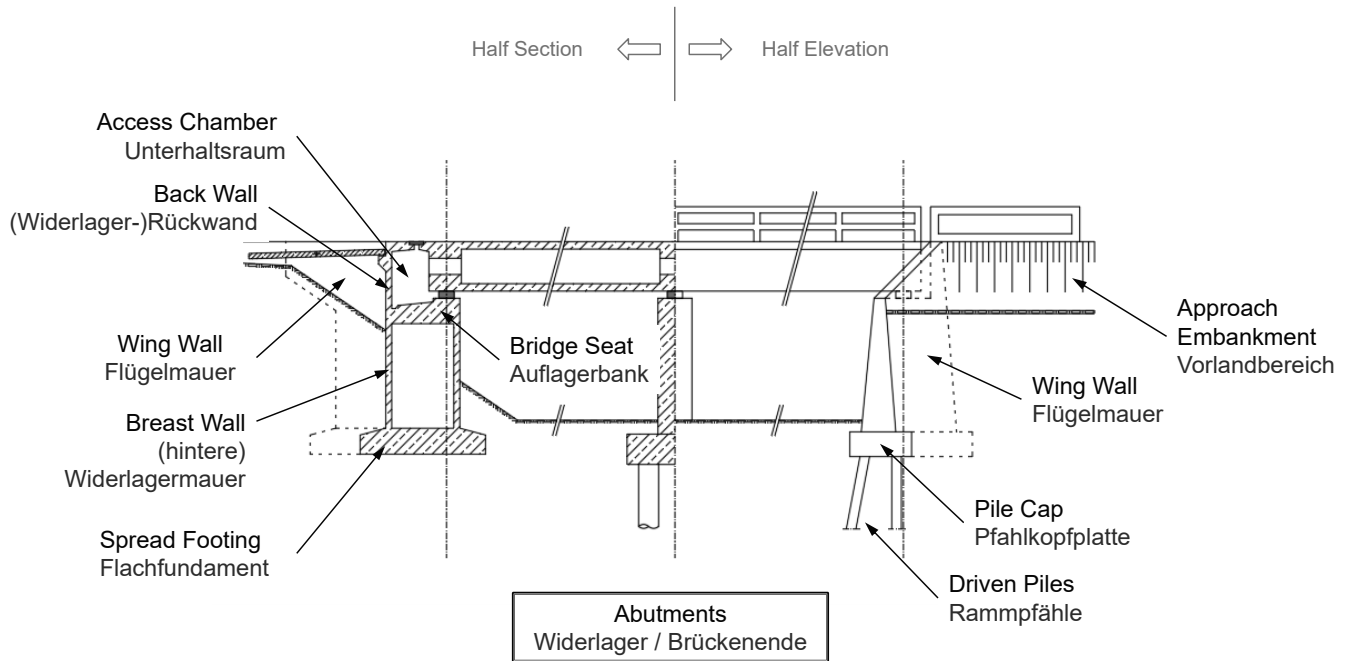


Notes [continued from previous slide]:

The substructure includes the piers (abutments, intermediate), foundations, retaining walls, approach works (such as embankments) to allow for transitioning from the road to the bridge, works to protect the foundations against scour or the piers from vehicle/vessel collision, etc.

The distinction between superstructure and substructure elements is relatively straightforward for structural systems such as girder bridges, as illustrated in this example. For other structural systems, such as arches (especially) or cable-supported bridges, this distinction may not always be as apparent. We will examine these structural systems in detail at the corresponding lectures.

General Characteristics - Nomenclature



22.02.2021

ETH Zurich | Chair of Concrete Structures and Bridge Design | Bridge Design Lectures

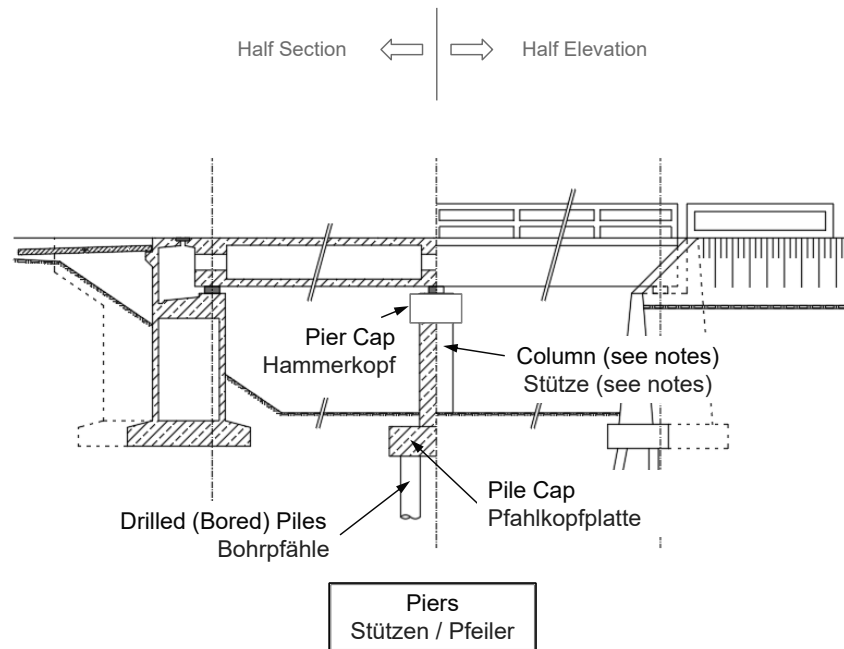
45

Notes:

The wing walls retain the approach embankment at the ends of the bridge. They can either be fixed to the abutments or independent substructure elements.

It is desirable to detail the abutments so that they include an access chamber to facilitate inspection and maintenance operations.

General Characteristics - Nomenclature

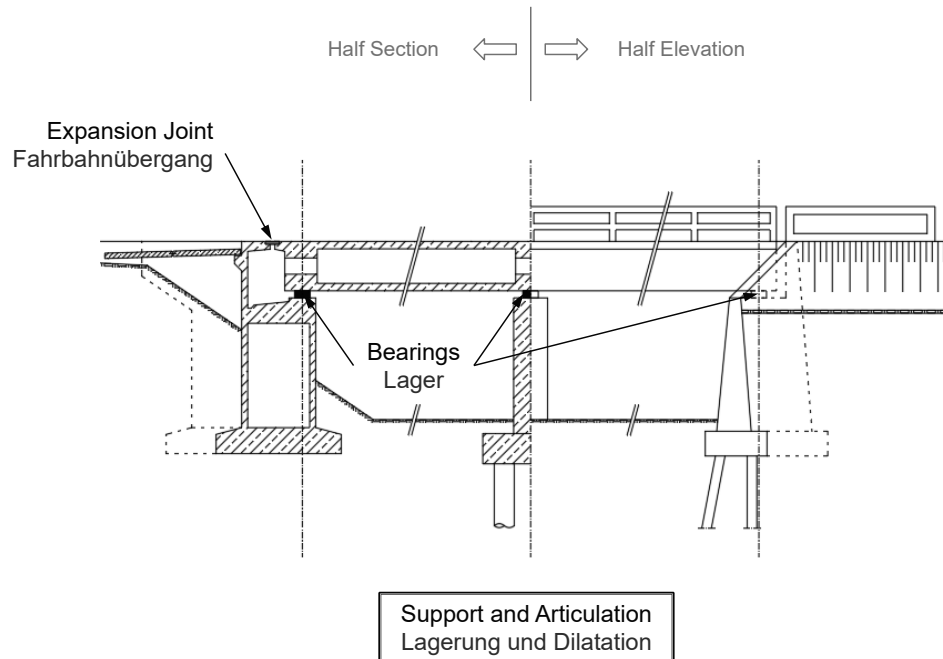


Notes:

The term “column” is specifically used for the vertical elements supporting the “pier cap” in bridges with a superstructure consisting of several girders (precast concrete I-beams or steel girders), which are in turn supported by the pier cap.

In other bridges, the term “column” is uncommon (“Stütze/Pfeiler” = “pier”).

General Characteristics - Nomenclature

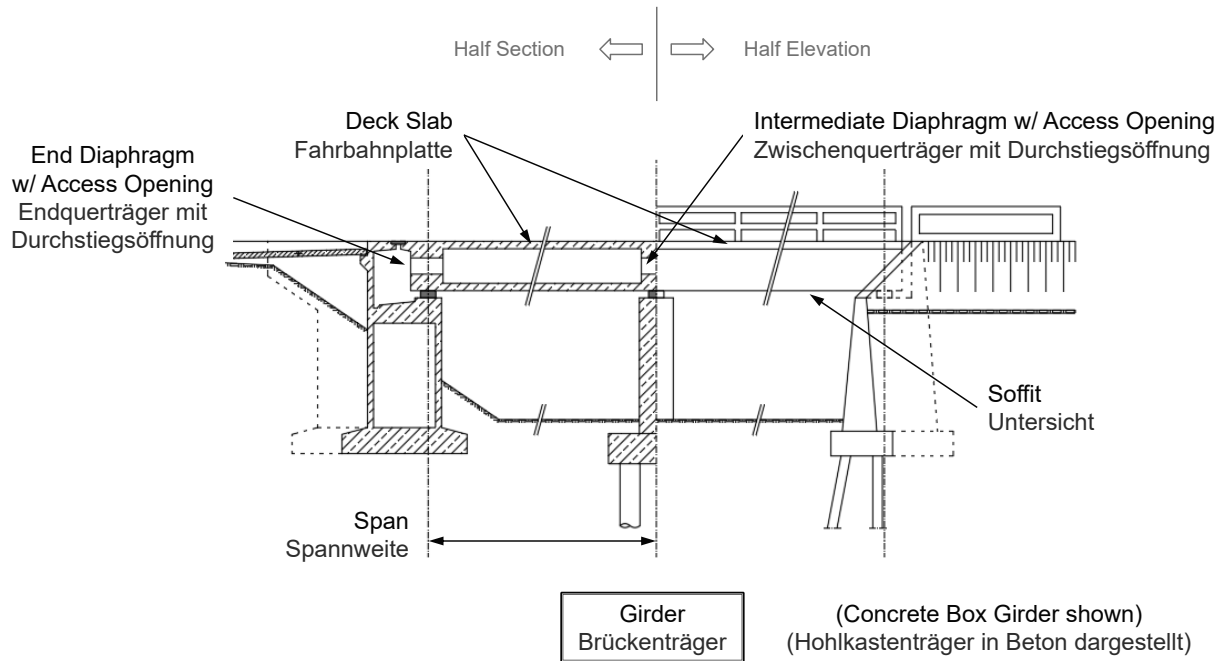


Notes:

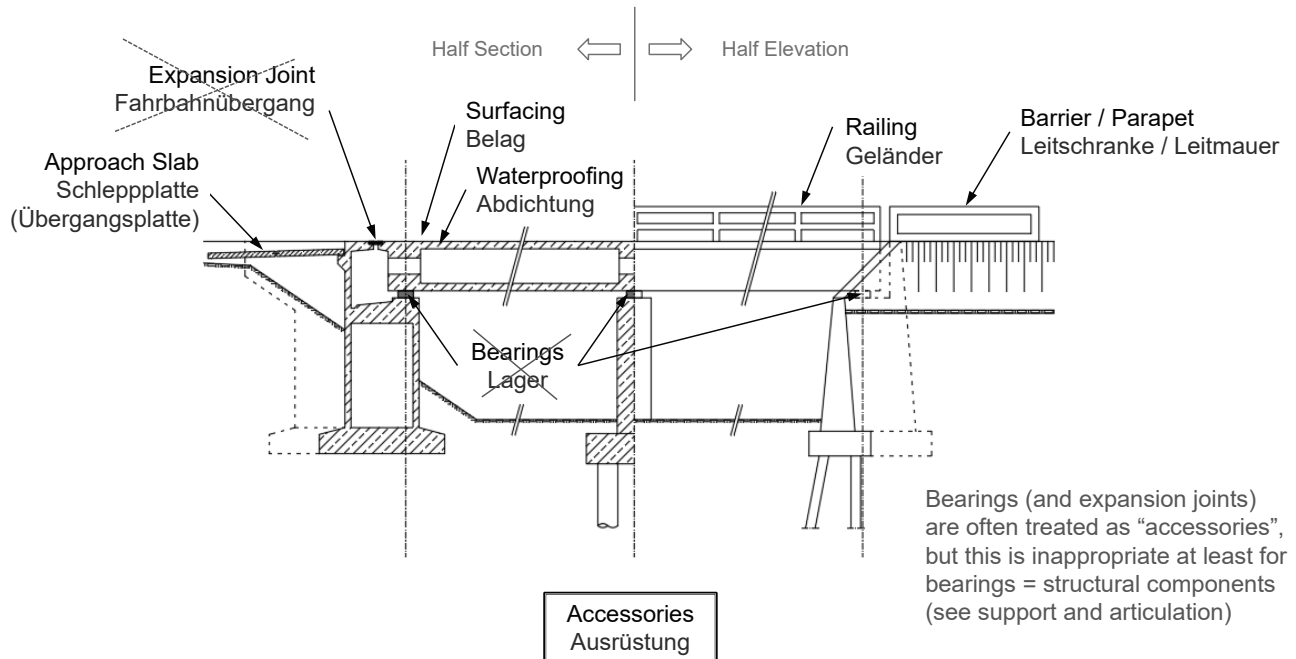
Bearings are devices inserted between the superstructure and the substructure, that transmit the superstructure loads to the substructure, while also allowing for relative movements between superstructure and substructure (displacements and/or rotations).

Expansion joints accommodate movements of the girder ends while facilitating a smooth ride (see next slide for more information).

General Characteristics - Nomenclature



General Characteristics - Nomenclature



Notes:

In order to ensure a smooth transition between the road (approach embankment) and the bridge, approach slabs are installed next to the abutments. Their function is to ensure a more gradual transition between the relatively soft embankment and the relatively rigid bridge, thus avoiding a kink in the roadway surface due to differential settlements.

Relative movements between the superstructure and substructure elements or among adjacent superstructure segments in the case of a discontinuous superstructure, are accommodated at joint locations through special devices (expansion joints). The type and complexity of these devices depends on the type of use of the bridge and the magnitude of the movements that have to be accommodated. The movements can be produced by a combination of concrete shrinkage and creep, post-tensioning shortening, thermal variations, dead and live loads, wind and seismic loads, and imposed settlements.

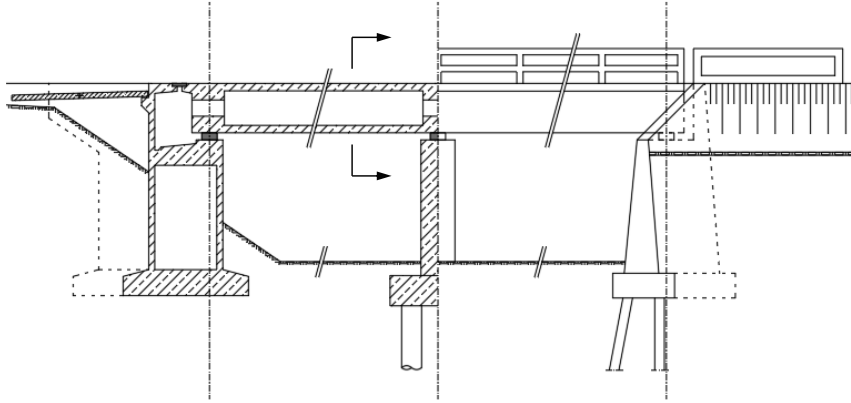
The durability and maintenance issues, commonly encountered with expansion joints, can be avoided through structural systems that feature continuous spans (over intermediate piers) built integrally with the abutments, thus eliminating expansion joints. The degree of continuity achieved varies depending on the connection details between the superstructure, substructure and approach slab elements. Elimination of expansion joints however results in the development of secondary stresses in the superstructure and substructure elements due to the imposed restraints on the superstructure movements. Therefore, there is a practical span limit beyond which joints must be introduced to control the magnitude of the secondary stresses. For more details, see the chapter on support and articulation.

General Characteristics - Nomenclature

Half Section

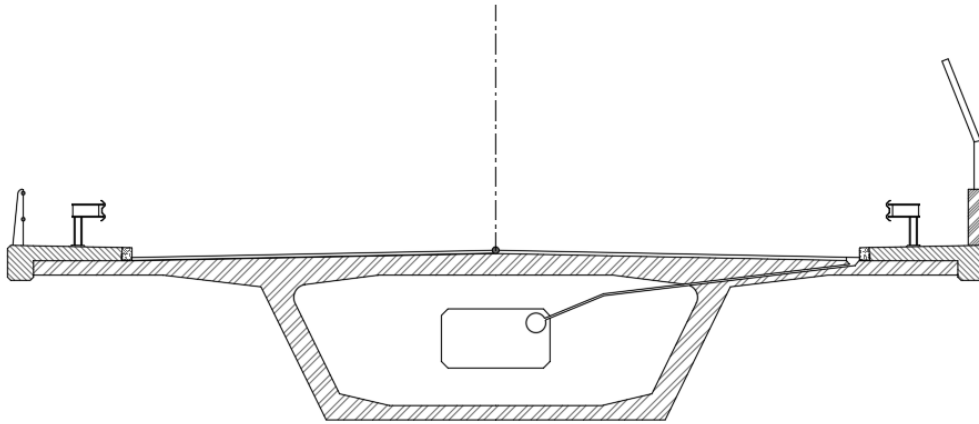


Half Elevation



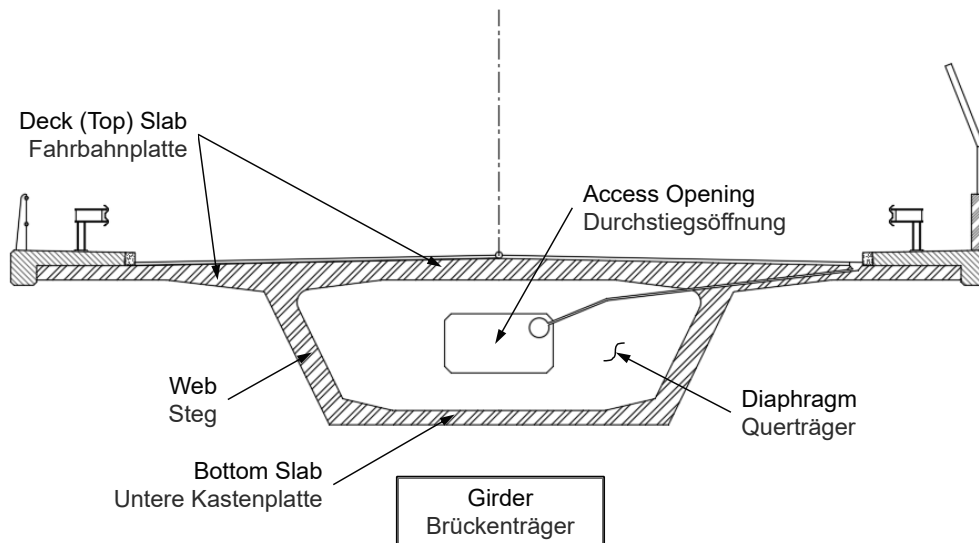
General Characteristics - Nomenclature

Typical Girder Section

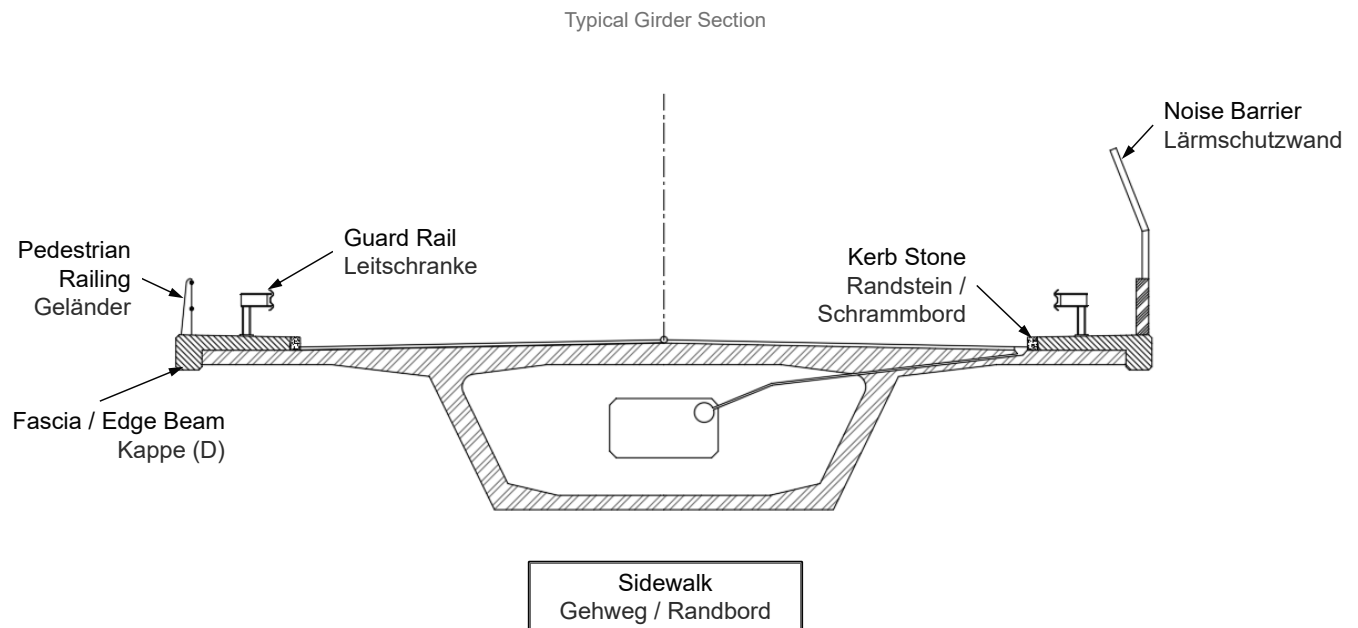


General Characteristics - Nomenclature

Typical Girder Section



General Characteristics - Nomenclature



22.02.2021

ETH Zurich | Chair of Concrete Structures and Bridge Design | Bridge Design Lectures

53

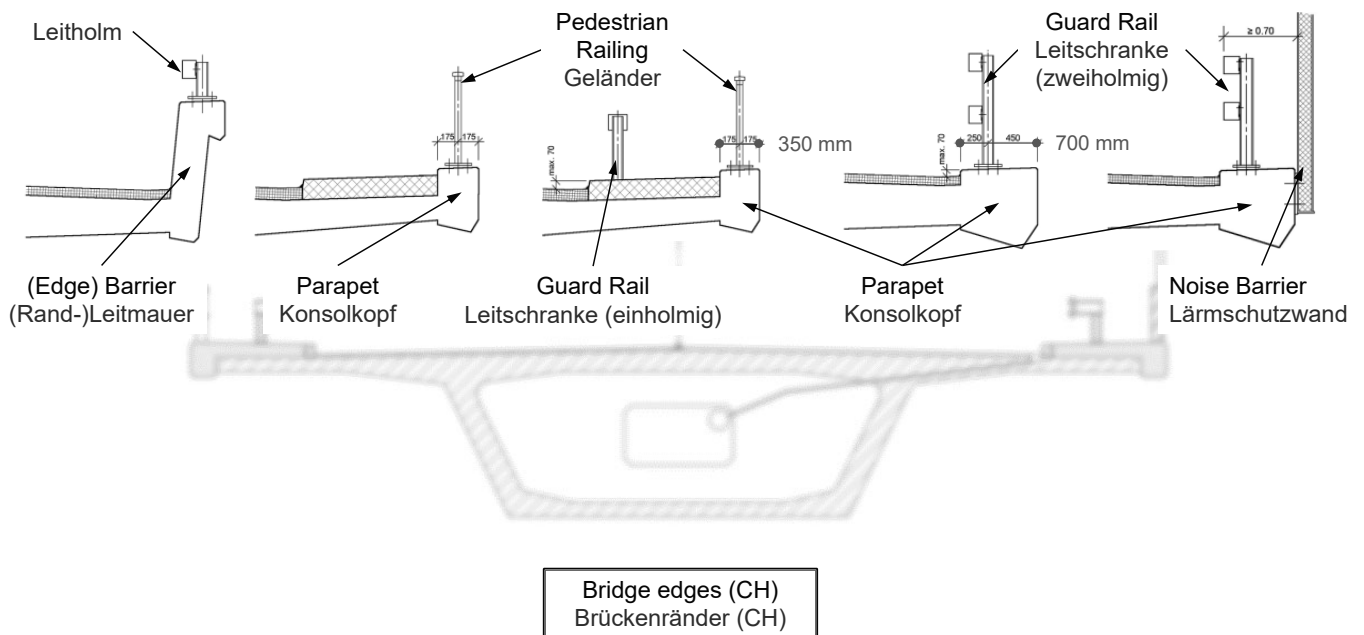
Notes:

The sidewalk width is determined based on the expected pedestrian (or non-motorised) traffic load. In urban areas, and assuming that pedestrians are not served by nearby dedicated pedestrian bridges, the sidewalk should be as wide as 2.0 ... 2.5 m (without cyclists). If no sidewalk is required, a minimum width of 0.5 m should be provided for emergency/occasional use. Many clients provide more detailed specifications, see conceptual design (clearances).

The sidewalk can be detailed so that it either acts independently from or compositely with the main girder. In either case, stability of the sidewalk in case of vehicular impact must be considered. If it is not separated from the roadway (occasional or accidental use by vehicles cannot be excluded), the walkways must be designed for full traffic loads.

The need for a guard rail/parapet (steel or concrete) that separates roadway from pedestrian traffic, depends on various parameters such as the bridge setting, i.e. urban vs. rural, the associated speed limits, the inclusion of a bicycle lane on the sidewalk, etc. In case the guard rail is omitted, a minimum height of the kerb should be respected (e.g. 15...20 cm, depending on client guidelines, see e.g. ASTRA RL 12004, chapter "Brückenrand").

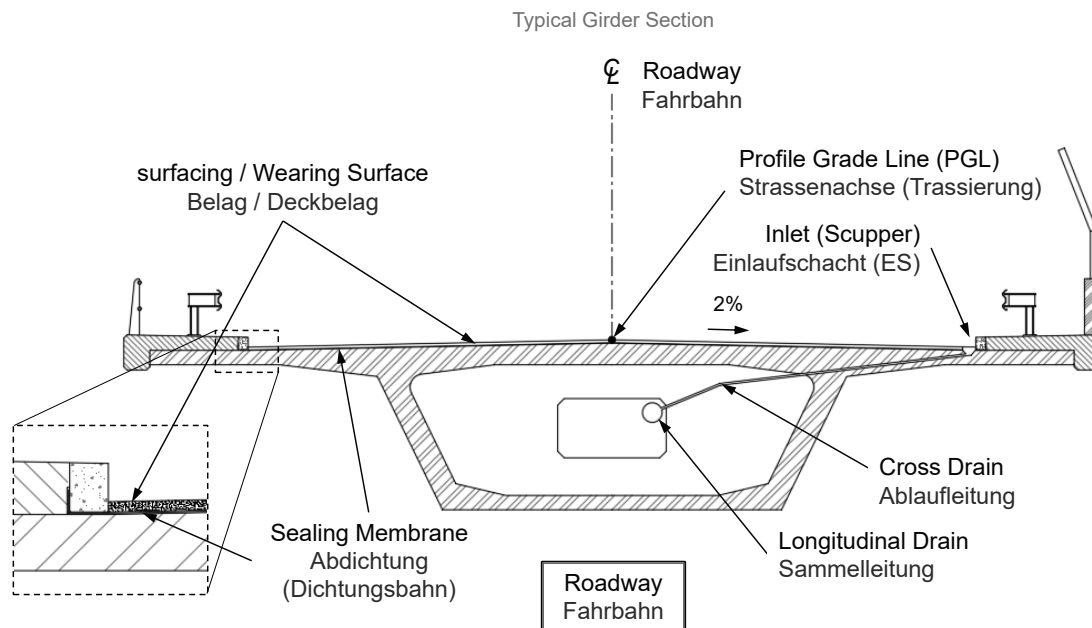
General Characteristics - Nomenclature



Notes

Bridge edges (Randabschlüsse) differ strongly depending on location and client. The slide shows typical details used in Swiss road bridges (from Astra Richtlinie 12004, all at same scale). The width of the parapet (700 mm) in case of crash barriers is required to ensure that wheels of colliding cars remain on the parapet (the barrier is flexible).

General Characteristics - Nomenclature



22.02.2021

ETH Zurich | Chair of Concrete Structures and Bridge Design | Bridge Design Lectures

55

Notes:

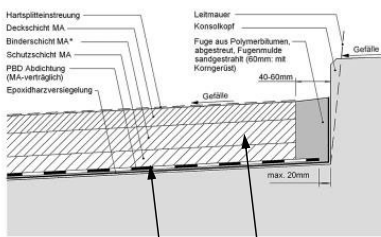
The general objective is that the driving experience on the bridge does not defer from that on the road. Therefore, in the case of short span bridges (culverts, spans less than 6 ... 7 m) the roadway follows the stratification of a road, e.g. granular compacted base layers followed by a bitumen concrete mix. For longer spans (usual case), the thickness of the roadway is kept to a minimum in order to limit the applied dead loads. A typical layout includes (from bottom to top) a sealing membrane (can be anchored around the kerb stone if present), followed by a membrane protection grout or concrete layer to form the required slopes, and finally the wearing surface (4 ... 5 cm thick).

The Profile Grade Line (PGL), developed by the civil (roadway) engineer, defines the roadway geometry in plan and elevation and acts as the reference line around which the bridge superstructure geometry is developed.

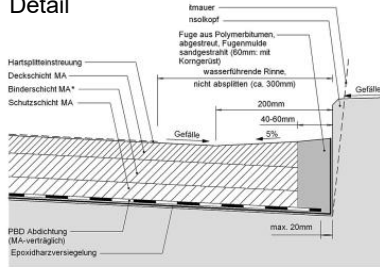
Drainage of the bridge deck is typically achieved through inlets (scuppers). Their location and density depends on the deck slopes (longitudinal and transverse) and the design runoff. Once the runoff is collected at the deck level, it may be directly discharged below through vertical downspouts (if permitted) or guided through a combination of transverse and longitudinal drain pipes to an acceptable discharge location (typically at intermediate piers or beyond the bridge limits).

General Characteristics - Nomenclature

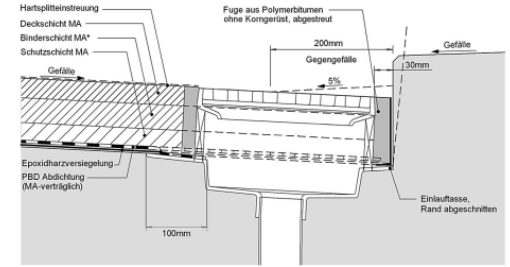
High point
Detail



Low point
Detail



Inlet (scupper) Detail



3 Layers of Mastic Asphalt
3 Schichten Gussasphalt

Sealing Membrane
Abdichtung
(Dichtungsbahn)

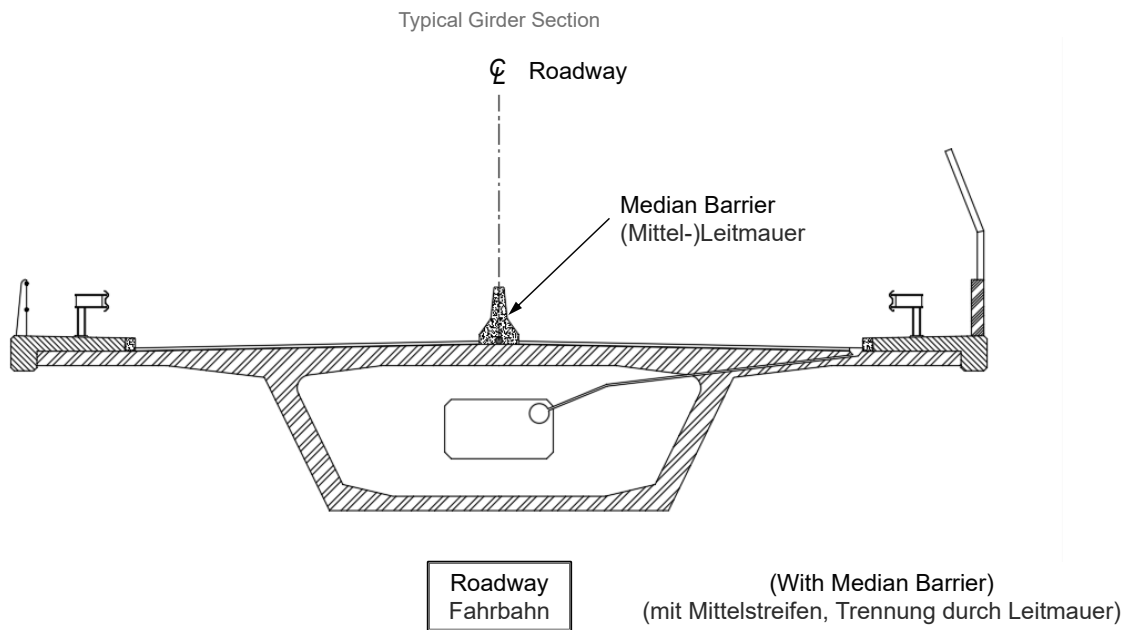
Roadway
Fahrbahn

Notes

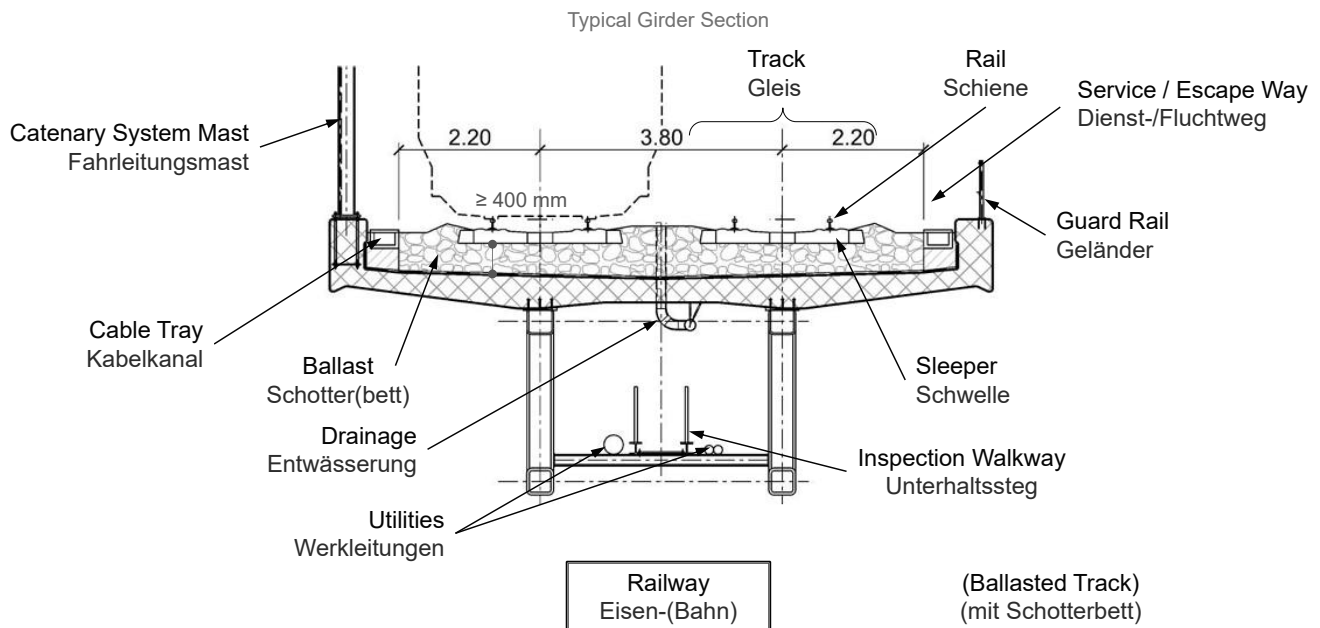
In Switzerland, three layers of asphalt (mastic asphalt MA or asphalt concrete AC), each 30-40 mm thick, are usually provided on top of the membrane (examples see figure, from ASTRA Fachhandbuch Kunstbauten).

Unlike mastic asphalt (MA), other surfacing types are not watertight. For example, asphalt concrete (AC) is permeable. Even if little water penetrates the surfacing, the surface below the AC needs to be drained to avoid freeze-thaw damages in regions with regular freezing (as Switzerland). To this end, so-called “surfacing drainage tubes” are required. Unless carefully planned and installed, surfacing drainages may cause severe corrosion damage (frequently observed in bridges from the 1960’s in Switzerland). Therefore, it is advisable to use mastic asphalt.

General Characteristics - Nomenclature



General Characteristics - Nomenclature



22.02.2021

ETH Zurich | Chair of Concrete Structures and Bridge Design | Bridge Design Lectures

58

Notes:

In the case of rail bridges, whenever possible, a ballast layer of about 50 cm (CH: min. 40 cm of ballast between sleeper and deck at rails) is placed on top of the deck slab, followed by the sleepers and rails. The ballast layer acts as an isolator between the bridge deck and the rail system and limits their interaction. This allows for differential expansion/contraction of the deck and the rails and also facilitates maintenance operations along the rail alignment. Whenever it is critical to limit the superstructure dead load, e.g. long-span bridges and/or bridges in regions with high seismicity, or when it is not practical to contain the ballast, e.g. steel truss bridges, the rail system can be directly fixed on the bridge deck (concrete or steel). This type of connection needs special consideration as the interaction between rail and deck needs to be explicitly considered, especially at the bridge ends and at intermediate expansion joints.